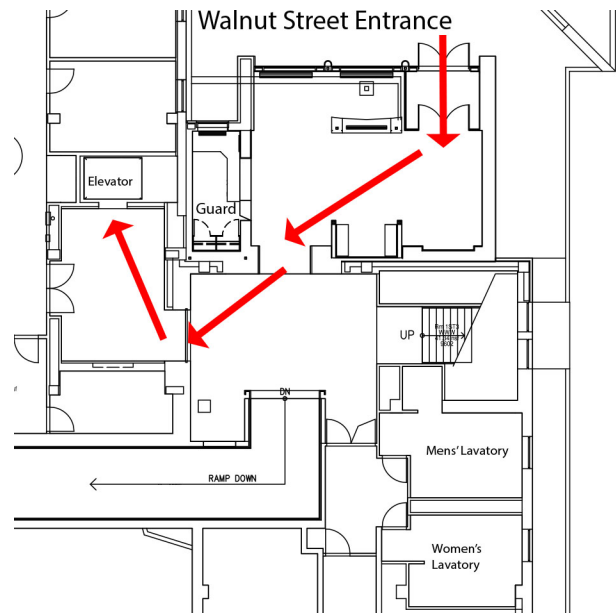
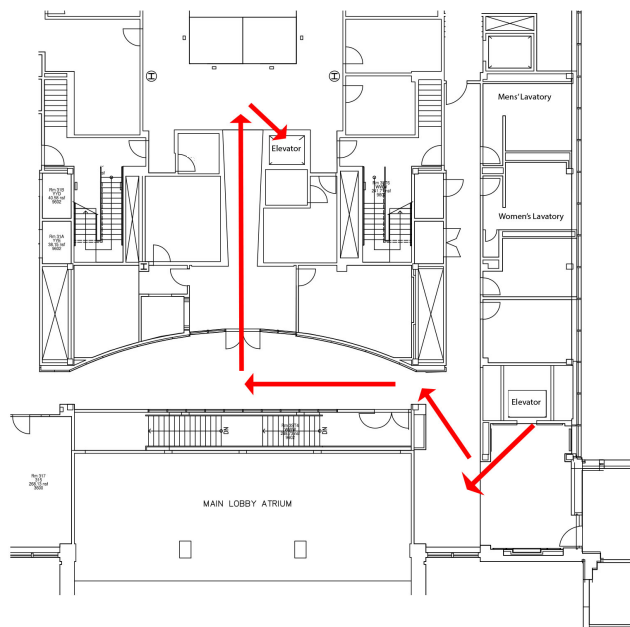


Instructions for Getting to Room 500 and Room 412

Enter the building through the Walnut Street doors. Check in at the guards' desk and continue through the atrium. Make a right to the elevator room and take the elevator to the 3rd floor.



Exit the elevator, make a right, another right, and then a left toward a set of double doors. Take the double doors and follow the corridor to the end. The elevator is on the right. Take it to the 5th floor to get to 500 or the 4th floor to get to 412.



For room 412, take the 3rd floor elevator to the 4th floor. Exit the elevator, make a right, then another right.

